

About Us

2011

established

in Prague, our company has built a strong reputation and stability.

42

countries

of presence confirm our growth and reliability.

10+10

years

as a Blaupunkt as a Blaupunkt manufacturer and distributor demonstrate long-term trust and commitment

60+

employees

expert sales & marketing hub, strong logistics, reliable after-sales.

● BLAUPUNKT

100 YEARS OF INNOVATION





**With Blaupunkt, happy
clients come back**

● **BLAUPUNKT**

Made for Everyday Life

- **German reliability** - TVs that work every day without compromise
- **Smart & simple** – intuitive systems for all generations
- **Popular apps support** – Netflix, YouTube, Prime Video, etc.
- **Picture & sound that impress** - Mini LED, MEMC, QLED, HDR, Dolby Vision, Dolby Atmos – and much more
- **Design that fits anywhere** – elegant frameless style
- **The right choice** – trusted quality at fair cost





**Now, Let's Dive Into
Our Product Range**



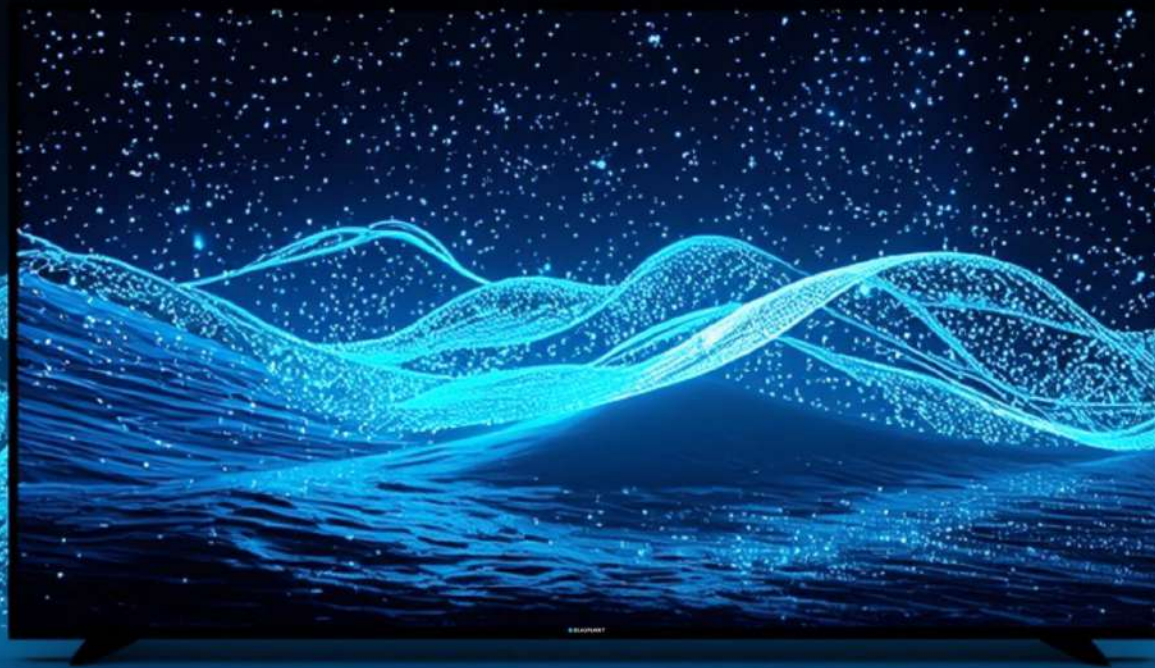
Google TV



Mini LED Mini LED GameLine



Mini LED



Feel thousands of tiny light sources come to life.

Mini LED Line details

55"

65"

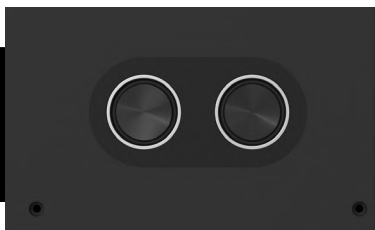
75"

85"

100"



BUILT-IN SPEAKERS
WITH **SUBWOOFER**
IN THE BACK OF TV



 Google TV

MCG8000

KEY FEATURES:

● Dolby VISION

● Dolby ATMOS

MEMC

AI Picture Quality

- 144Hz*
- HDR 10
- BUILT-IN SPEAKERS WITH **SUBWOOFER BEHIND TV***
- UP TO 1600 DIMMING ZONES
- UP TO 1000 NIT BRIGHTNESS
- 2GB RAM/16GB ROM
- GTV 5.0

*55"- 60 Hz, without subwoofer, 8GB ROM

MCG8000

Mini LED Line details



100"

100% pure
enjoyment.



100"

Mini LED GameLine details

55"

65"



 Google TV

MBG7000

KEY FEATURES:

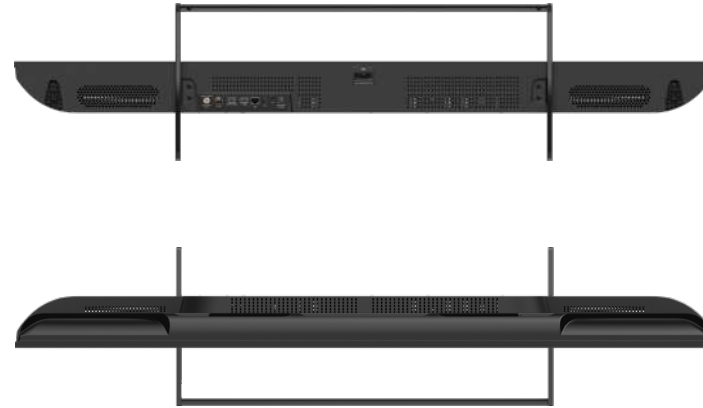
MEMC

- Dolby VISION IQ
- Dolby VISION
- Dolby ATMOS

- GAME MODE
- HDMI 2.1 / EARC
- HDR 10+
- 144 HZ
- UP TO 84 DIMMING ZONES
- UP TO 350 NIT BRIGHTNESS
- GTV 3.0

MBG7000

Mini LED GameLine details



QLED





QLED.

Paint your world
with vivid QLED

QLED Line details

75"

85"



QBG8000

KEY FEATURES:

MEMC

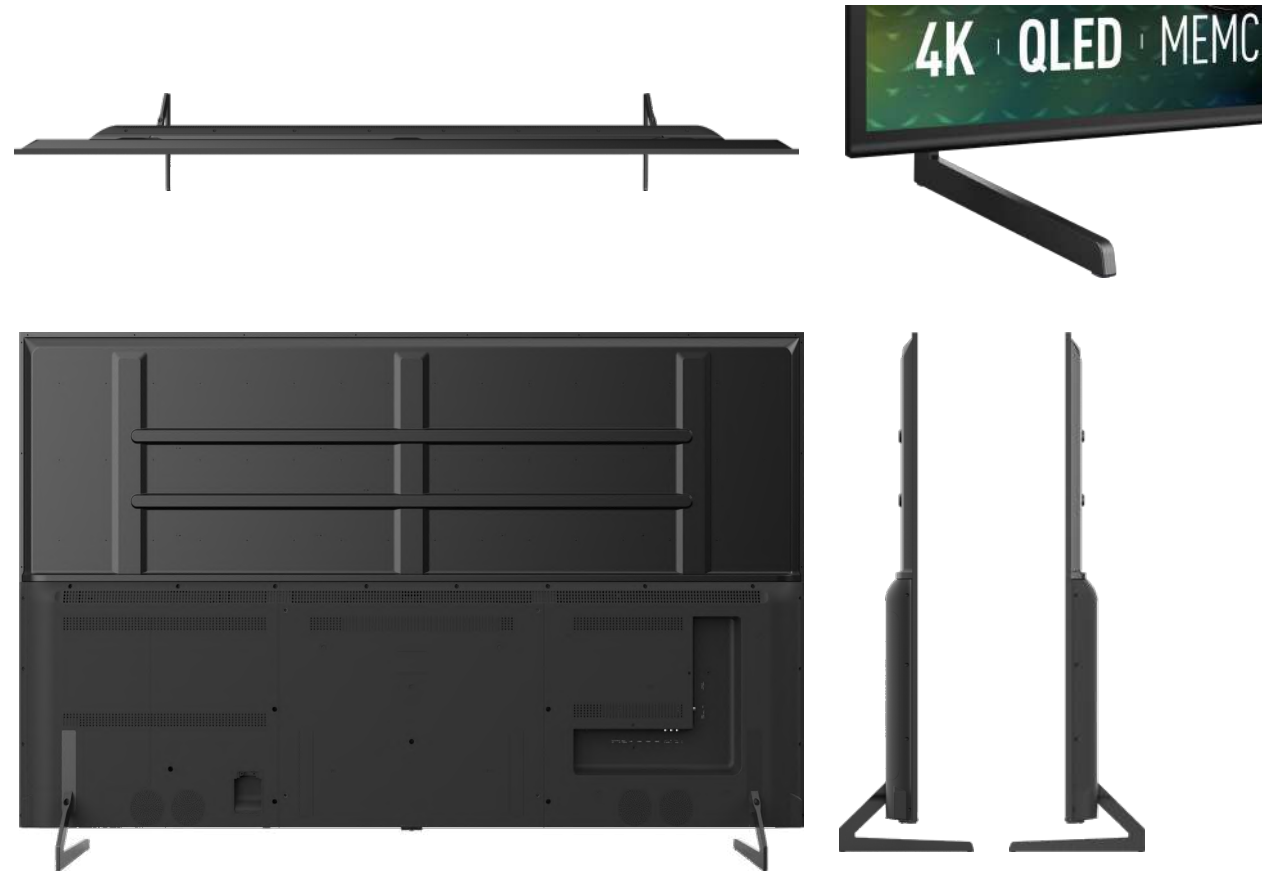
●● Dolby VISION

●● Dolby ATMOS

- GAME MODE
- 400 NIT BRIGHTNESS
- HDMI 2.1 / EARC
- GTV 3.0

QBG8000

QLED Line details



QLED Line details

43"

50"

55"

65"

75"



QBG6000

KEY FEATURES:

MEMC

●● Dolby VISION

●● Dolby ATMOS

- GAME MODE
- VRR/ALM
- UP TO 400 NIT BRIGHTNESS
- HDMI 2.1 / EARC
- GTV 3.0

QBG6000

QLED Line details



QLED Line details

32"

43"



QBG6000

KEY FEATURES:

- Dolby VISION
- Dolby ATMOS

- GAME MODE
- VRR/ALM
- UP TO 300 NIT BRIGHTNESS
- HDMI 2.1 / EARC
- GTV 3.0

* 32" HD no Dolby Vision / Atmos
43" FullHD

QBG6000

QLED Line details



QLED Line details

40"

86"



QCG6000

KEY FEATURES:

MEMC

●● Dolby VISION

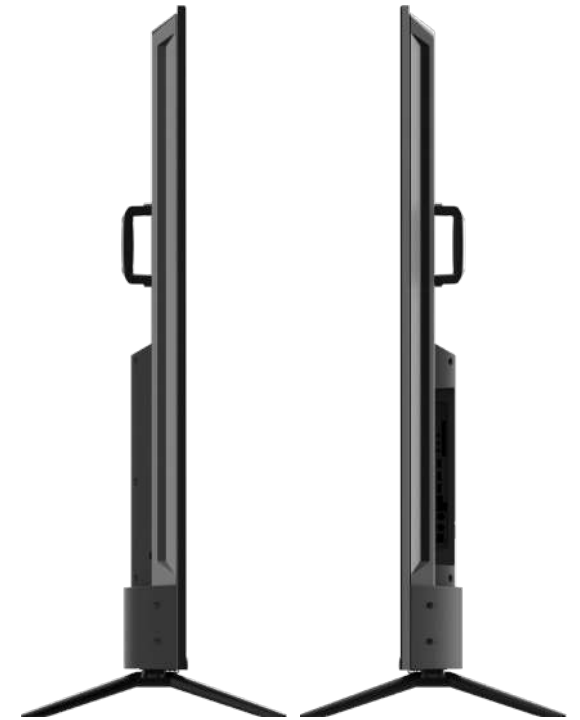
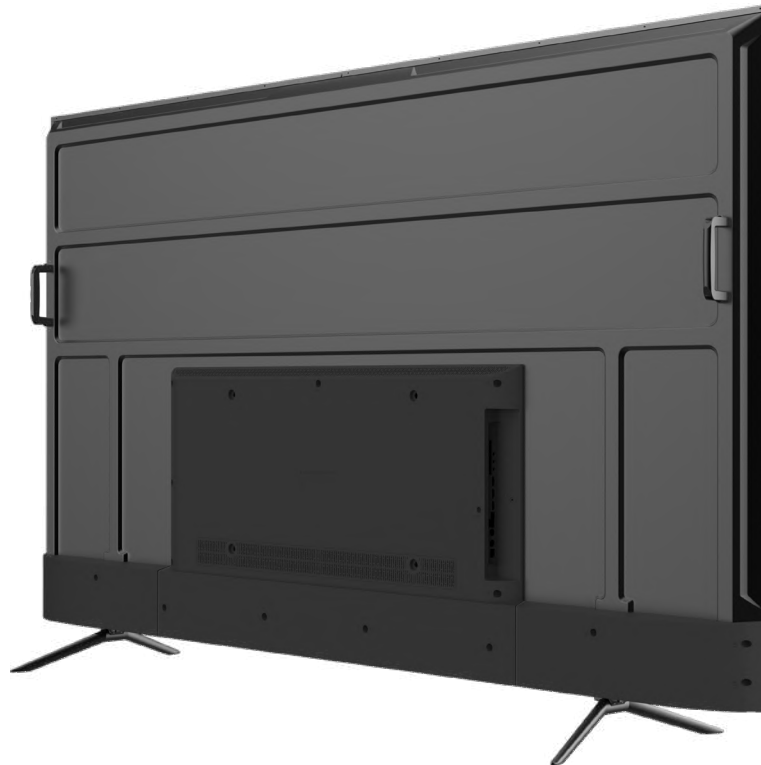
●● Dolby ATMOS

- GAME MODE
- VRR/ALM
- UP TO 350 NIT BRIGHTNESS
- HDMI 2.1 / EARC
- GTV 5.0

* 40" no Dolby Vision / Atmos, FullHD

QCG6000

QLED Line details



LED



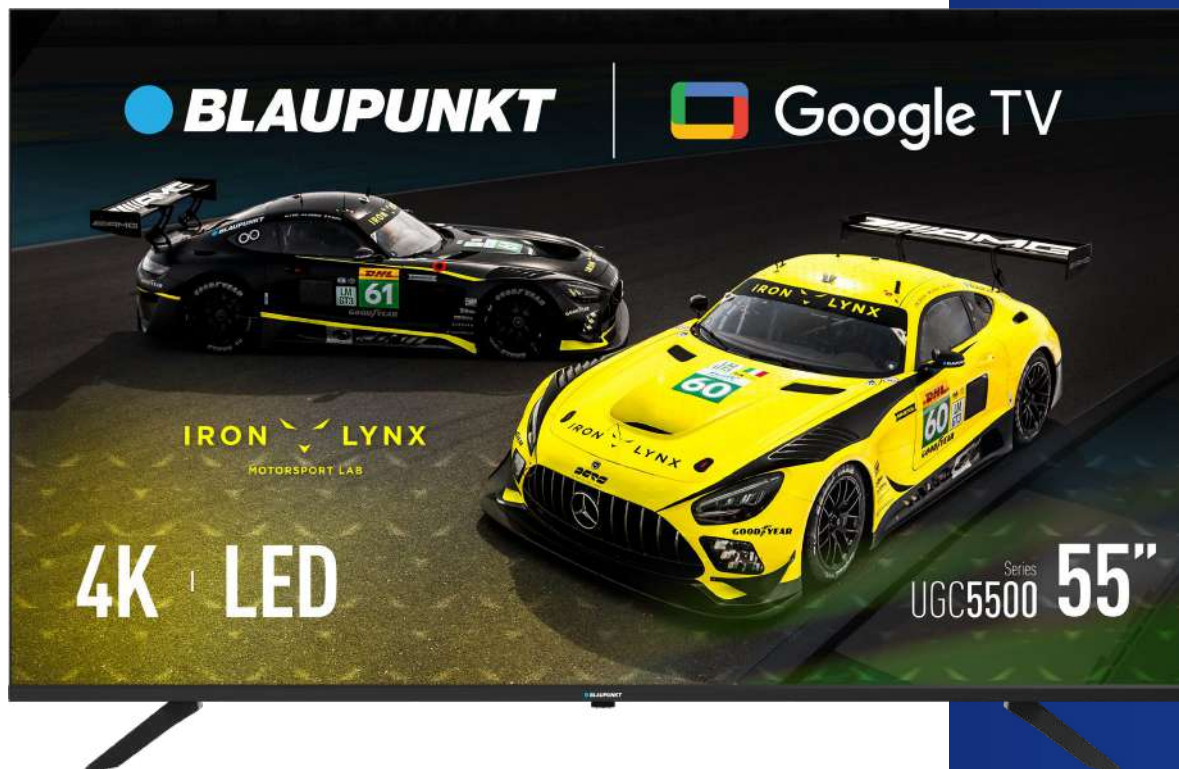
Super Slim Frame.

Super slim. Super light.
Designed to be almost
invisible.



LED Line details

- 24" 58"
- 32" 65"
- 40" 70"
- 43" 75"
- 50" 86"
- 55"



UGC5500 UGC5520

KEY FEATURES:



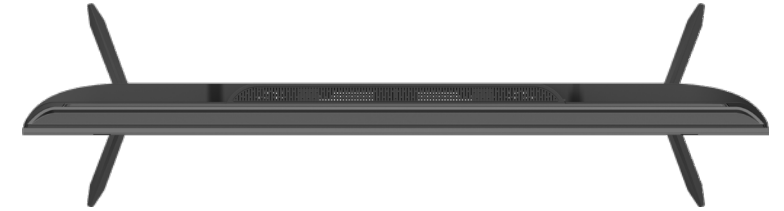
- DIRECT LED
- UP TO 350 NIT BRIGHTNESS
- GTV3.0

*

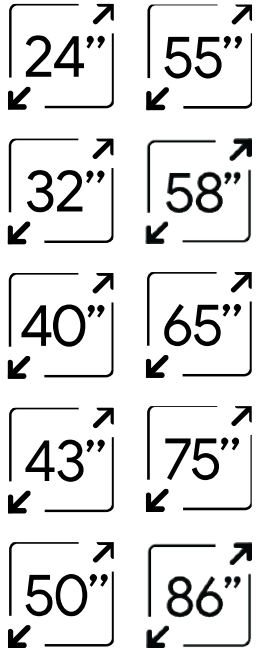
- WGC5500 HD-Ready
- WGC5520 HD-Ready
- FGC5500 FHD GTV5.0
- UGB5500 UHD

UGC5500/UGC5520

LED Line details



LED Line details



UGC5501 UGC5521

KEY FEATURES:

 **Dolby
AUDIO**

- DIRECT LED
- GTV 5.0
- UP TO 350 NIT BRIGHTNESS
- Frameless thin design (Super slim)

*

- WGC5501 HD-Ready
- WGC5521 HD-Ready
- FGC5501 FHD

 **Google TV**

UGC5501/UGC5521

LED Line details

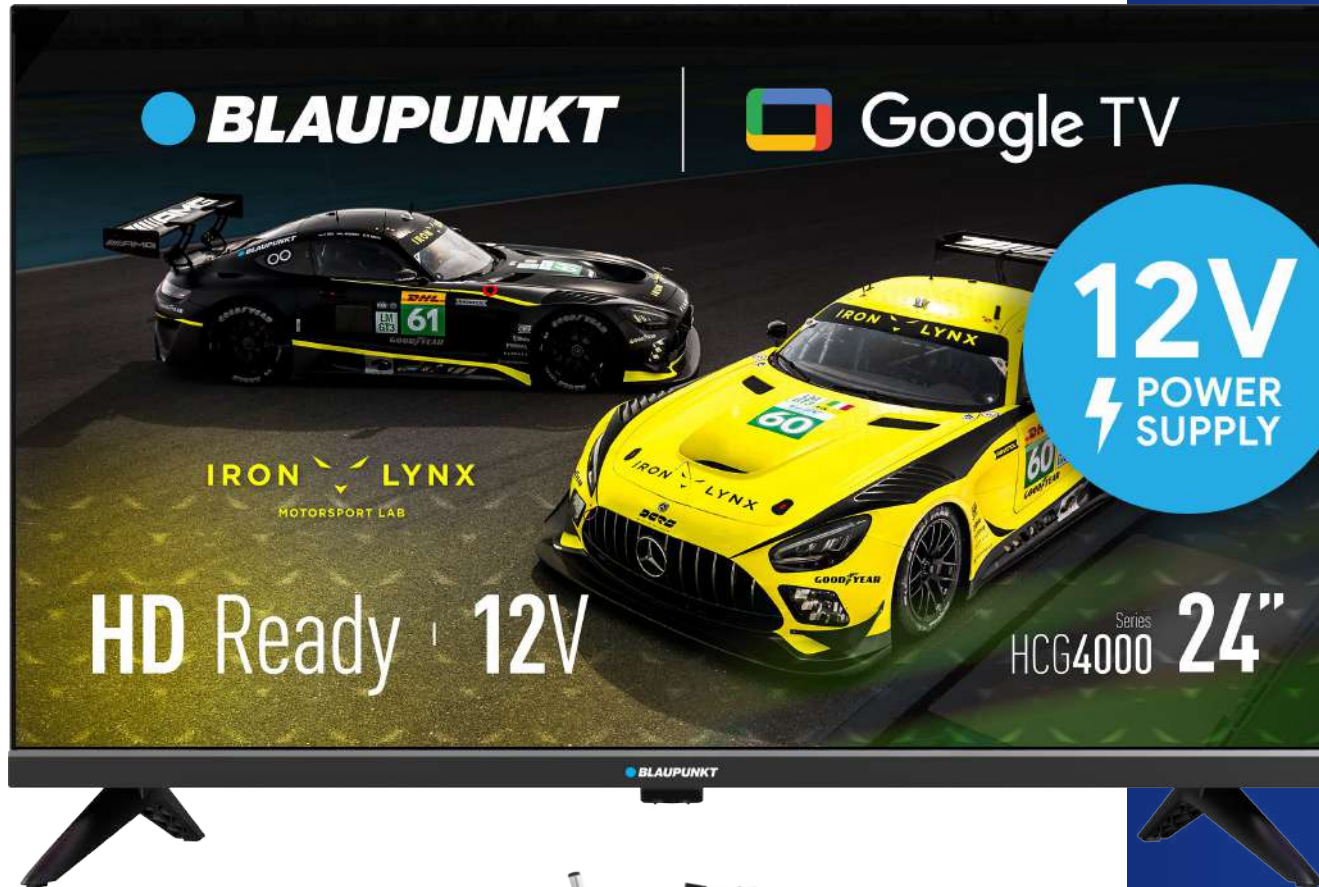


Blaupunkt 12V TV



12V TV Line details

24"



Google TV

HCG4000

KEY FEATURES:

Dolby AUDIO

- 12V
- GTV 3.0
- HD-READY
- 180 NIT BRIGHTNESS

PERFECT FOR:

- TRUCK
- CAMPER
- BOAT
- CAR

HCG4000

12V TV Line details



White LED TV



White LED TV details



UBG6010

KEY FEATURES:

**Dolby
AUDIO**

MEMC

- UHD
- GTV 3.0
- 250 NIT BRIGHTNESS
- WHITE FRAME

UBG6010

White LED TV details



White LED TV details



FBG5010

KEY FEATURES:

● **Dolby
AUDIO**

- FULL HD
- 250 NIT BRIGHTNESS
- GTV 3.0
- WHITE FRAME

FBG5010

White LED TV details



TIZEN TV



TIZEN TV Line details

40"

43"



FCT6000

KEY FEATURES:

 **Dolby**
AUDIO

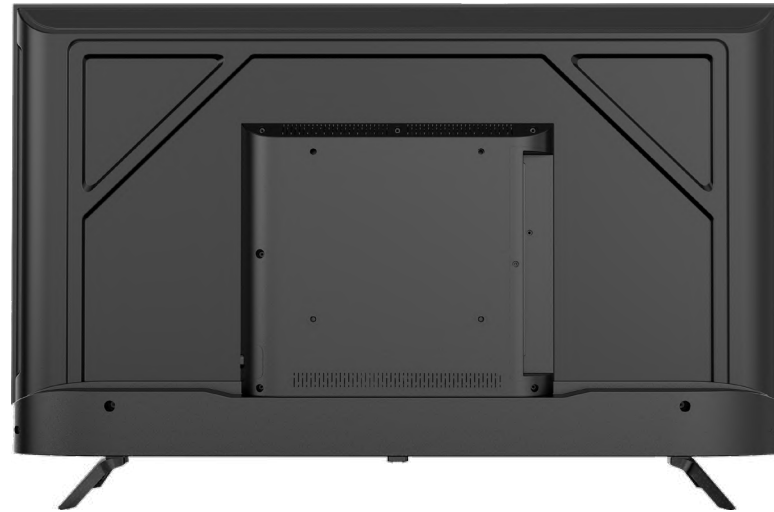
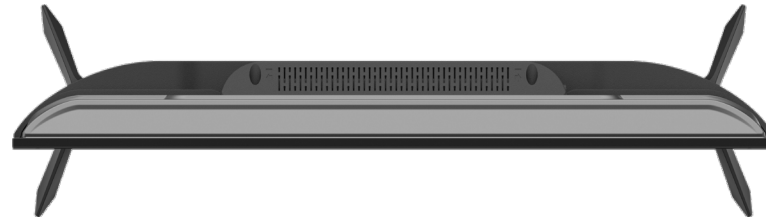
- SAMSUNG OS
- SAMSUNG GAMING HUB *
- SAMSUNG TV PLUS*
- UP TO 260 NIT BRIGHTNESS
- HDR 10

Tizen OS

* availability depending on country

FCT6000

TIZEN TV Line details



TIZEN TV Line details

32"



Tizen OS

HCT6000

KEY FEATURES:

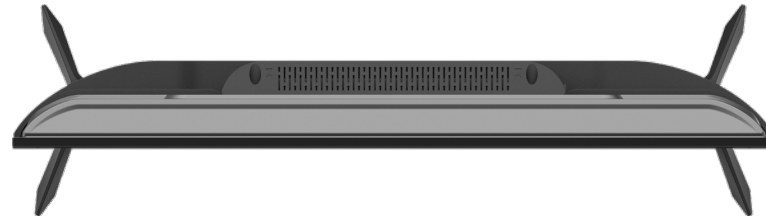
**Dolby
AUDIO**

- SAMSUNG OS
- SAMSUNG GAMING HUB *
- SAMSUNG TV PLUS*
- 240 NIT BRIGHTNESS
- HDR 10

* availability depending on country

HCT6000

TIZEN TV Line details



Web OS



32"

43"



HLW4000 ULW6000

KEY FEATURES:



- DIRECT LED
- 32" HD-Ready 43" UHD
- Web OS
- **1.5/8GB**
- UP TO 230 NIT BRIGHTNESS
- HDR 10

webOS

*available for production

43"



QLW6000

KEY FEATURES:



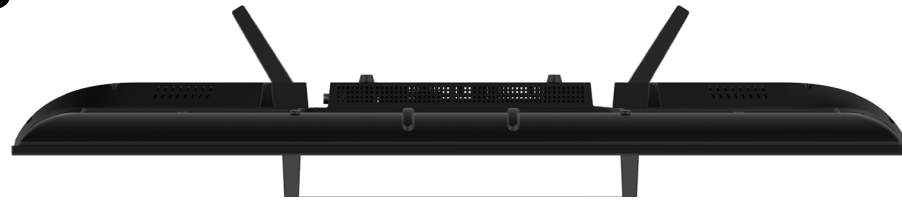
- DIRECT LED
- UHD-QLED
- Web OS
- 1.5/8GB
- 280 NIT BRIGHTNESS
- HDR 10

webOS

*available for production

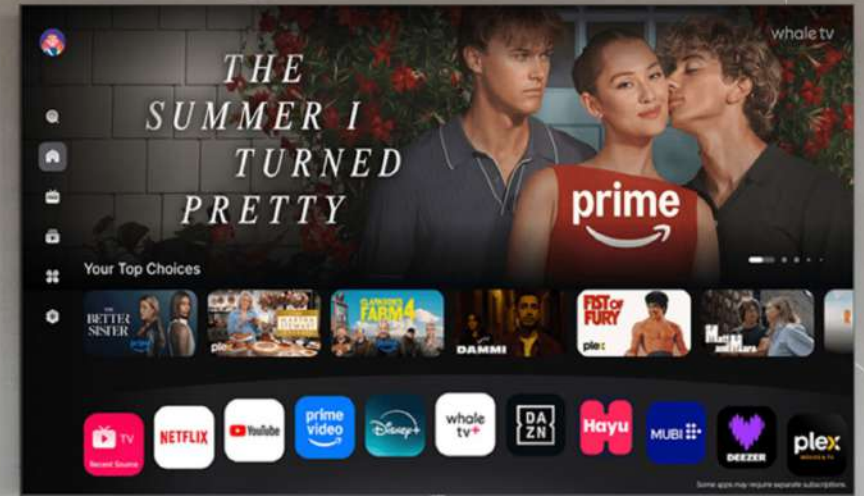
HLW4000S/ULW6000S/QLW6000S

Web OS Line details



WHALE TV

Coming soon...



Non-smart TV



32"

40"



Non-smart TV

HAE4000
HBE4000
HCE4000
FCE4000

KEY FEATURES:

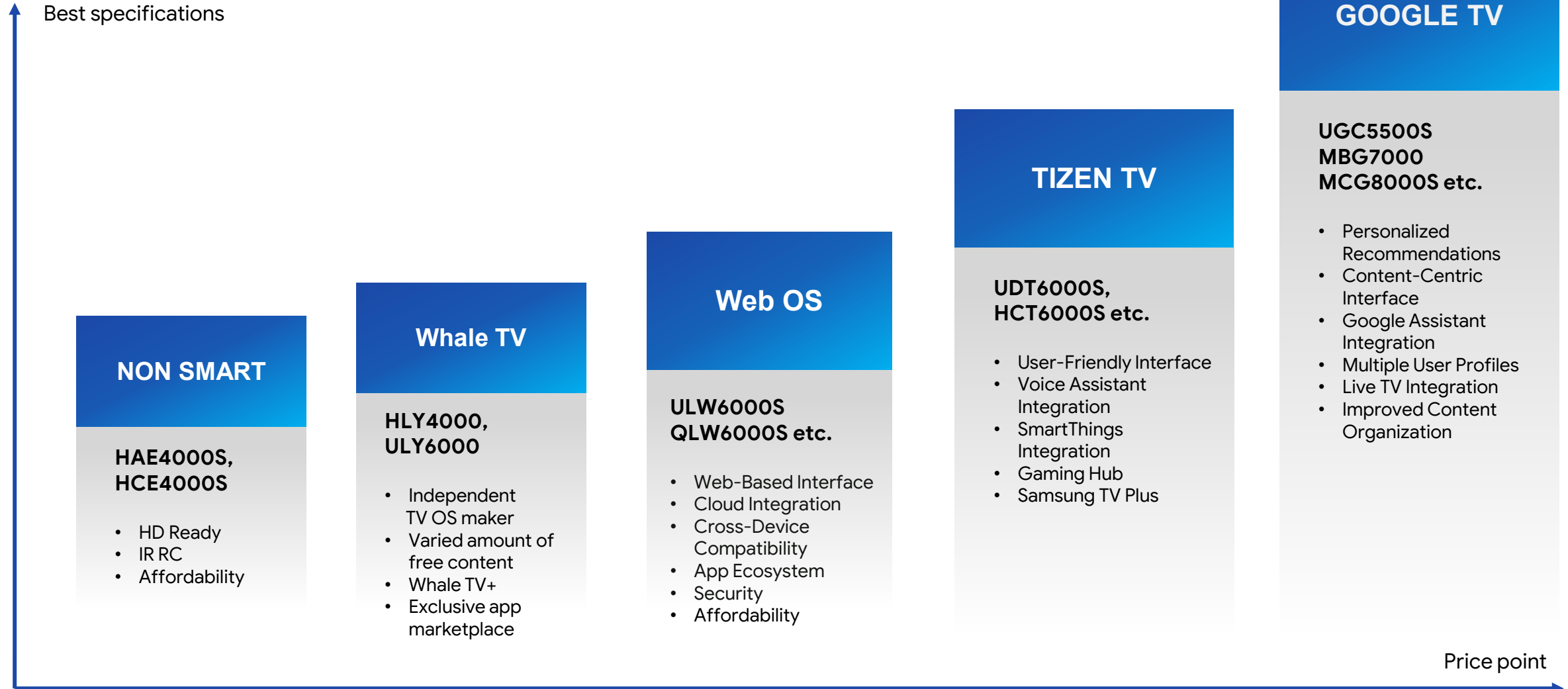
Dolby
AUDIO

- HD-Ready LED TV
- UP TO 240 NIT BRIGHTNESS
- HDR 10

*

- HAE4000 HBE4000 no HDR 10
- FCE4000 FHD

TV Families by system



2025 / 2026 Trade Line Up



* - optional

PROJECTORS
INTERACTIVE FLAT PANELS
OTT BOXES





F-Stream projector Gen3 **CGA6003**

- Brightness: 600ANSI
- Contrast: 1500:1
- Up to 2H battery life
- Speakers: 5W+5W
- 1080p
- Auto Screen-fit
- ARM Cortex-A55
- 1.45GHz
- Quad Core
- Mali G52 MP2
- MT9266
- Netflix, YouTube, Prime Video
- GTV

NETFLIX

 **YouTube**

prime video




BLAUPUNKT

Google TV



**BEST PORTABLE
PROJECTOR**



620 ANSI lm
Brightness



Triple Laser
Light Source



Up to 2H
Battery Life



Collapsible
Trestle Design



D-Stream projector **SGA6201**

- Brightness: 620ANSI
- Contrast: 1300:1
- Up to 2H battery life
- Speakers: 5W+5W
- 1080p, 4K Decoding
- Auto Screen-fit
- ARM Cortex-A53
- 1.45GHz
- Quad Core
- Mali G52 MP2
- MT9630
- Triple laser light source
- GTV

NETFLIX

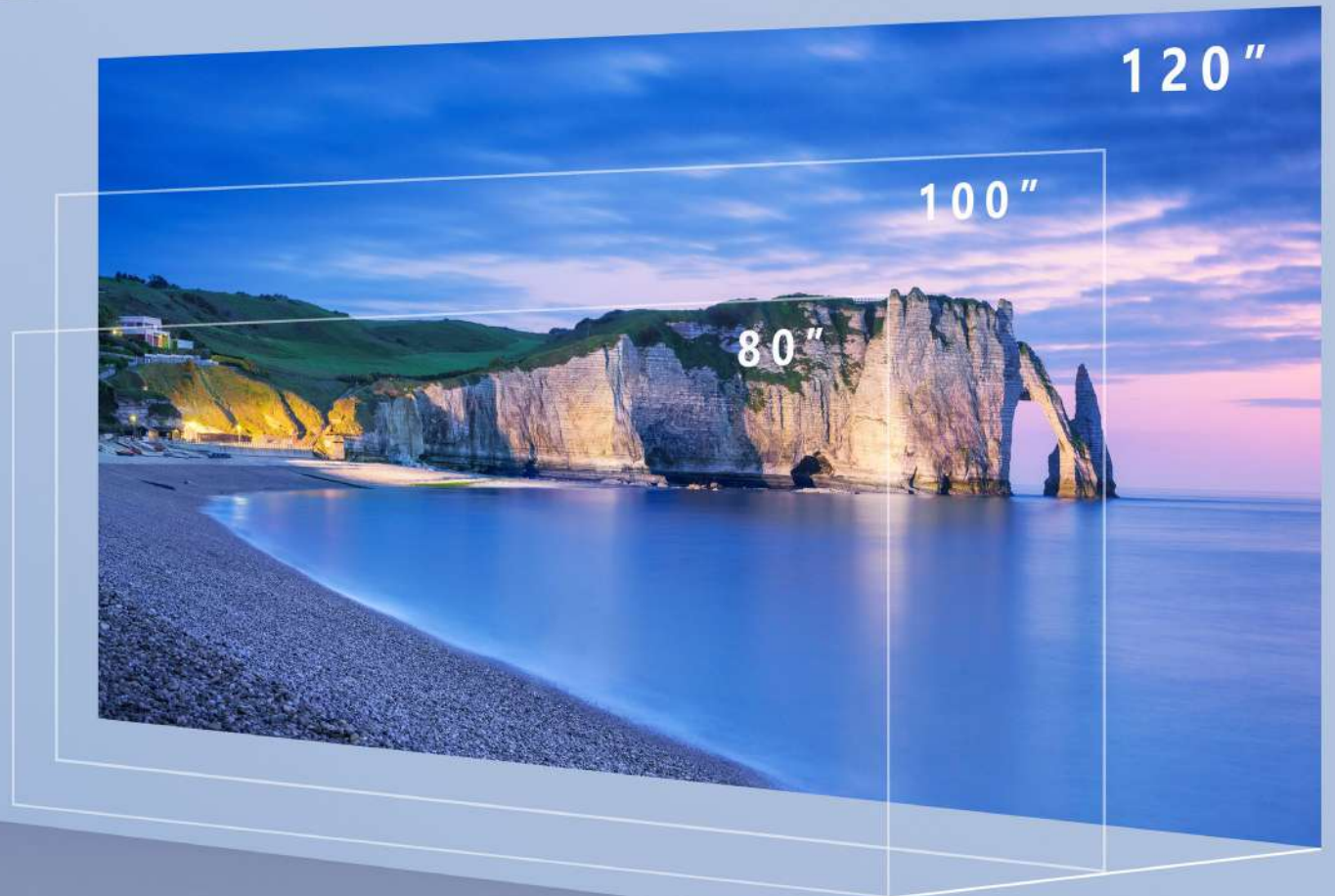
YouTube

prime video

1.25 : 1 THRO RATIO

Large screen can
be projected in small room

A 50-120 inch screen can be easily projected in the living room and bedroom of mainstream Chinese families via distance adjustment; with a wall only, you enjoy movies, concerts and games.





F-Stream projector Gen2 **CGA2202**

- Brightness: 220ANSI
- Contrast: 1400:1
- Up to 4H battery life
- Speakers: 4W+4W
- 1080p, 4K Decoding
- Auto Screen-fit
- ARM Cortex-A53
- 1.45GHz
- Quad Core
- Mali G52 MP2
- MT9630
- Netflix, YouTube, Prime Video
- Dolby Atmos Decoding
- GTV



Interactive flat panel

65W72B



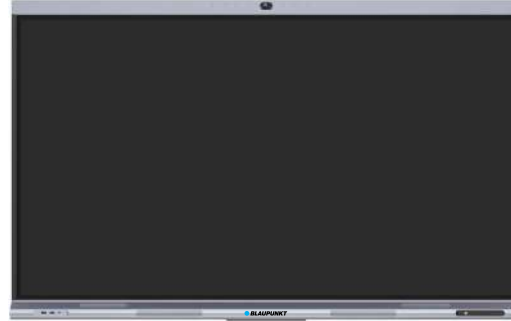
- D-LED 65"
- Android 13
- Brightness: 300 nit
- Contrast: 1200:1
- Sensitivity: 26dB
- Speakers: 15W+15W
- Memory: 4/32GB

75W72B



- D-LED 75"
- Android 13
- Brightness: 350 nit
- Contrast: 1200:1
- Sensitivity: 26dB
- Speakers: 15W+15W
- Memory: 4/32GB

86W72B



- D-LED 86"
- Android 13
- Brightness: 350 nit
- Contrast: 1200:1
- Sensitivity: 26dB
- Speakers: 15W+15W
- Memory: 4/32GB

98W72B



- D-LED 98"
- Android 13
- Brightness: 400 nit
- Contrast: 1200:1
- Sensitivity: 26dB
- Speakers: 16W+16W
- Memory: 4/32GB

android 13



TOUCH PEN



TOUCH SCREEN



OTT boxes and stick

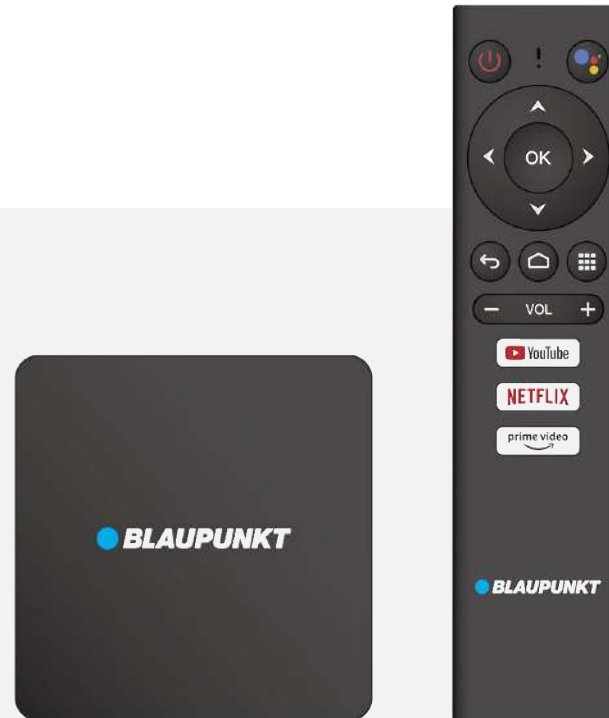
A-Stream stick



- DV6069Y
- Android TV
- S805X2 15K DMIPS
- 1080@60fps
- Wi-Fi5 802.11ac
- 90*30*13.5 mm
- 2/8GB
- HDR

androidtv

B-Stream box



- DV8535
- Android TV
- S905X4 24K DMIPS
- 4K@60fps
- Wi-Fi6 802.11ac
- 140*164*70 mm
- 2/8GB
- HDR

androidtv

OTT boxes and stick

A-Stream stick Gen2



- GR9055D
- Google TV
- S905Y5
- 20K DMIPS
- Wi-Fi 5 802.11b/g/n/ac
- 80*60*16 mm
- HDR10+
- 2/32GB

B-Stream box Gen3



- GR9055B
- Google TV
- S905X5M
- 30K DMIPS
- Wi-Fi 5 802.11b/g/n/ac
- 99*99*19 mm
- HDR10+
- 2/32GB

OTHER DEVICES



Android/Apple Two Channel Smart Finder Model: OAA1014F

Specifications

- Compatible Google Find My device
- Works with Apple Find My App
- Battery: CR2032 Button Cell
- Battery life: 10 months
- IPX4 water resistant
- Replaceable battery
- Size: 36x36x7.5mm
- Weight: 11g



Android Smart Finder

Model: OA1017F

Specifications

- 1 Compatible Google Find My device
- 2. Battery: CR2032 Button Cell
- 3. Battery life: 10 months
- 4. Replaceable battery
- 5. Size: 39.5 X 34.4 X 7.5mm
- 6. Weight: 11g



Works with Android
Find My Device

Apple Smart Tracker (Card Style) Model: OA1018K

Specifications

- Works with Apple Find My App
- MFi certified
- Built-in rechargeable battery
- Low battery alert
- Magnet pin charging
- Compact design
- Size: 86x55x2.5mm
- Weight: 10g



Apple Smart Tracker (Key Chain Style) Model: OA0411K

Specifications


- Works with Apple Find My App
- MFi Certified
- Battery: CR2032 Button Cell
- Battery life: 10 months
- Replaceable battery
- Size: 36x36x7.5mm
- Weight: 11g



Wireless TV speaker with Hearing Aid Technology Model: BT24

- Easy to use interface
- Easy setup
- Compact and light weight
- Battery life: 18 hours
- Main unit : 210x100x60cm
- Weight : about 800 g
- Transmitter: 160x20x60mm
- Weight : about 100 g
- 3D Sound effects
- Output Power: 2 x 5W





Why Blaupunkt for B2B

It's Easy to Work With Us Because

- **Trusted brand** - over 100 years of history and strong German quality
- **Wide product range** - options for every budget and market segment
- **Marketing & design support** - complete materials for every product launch
- **Sales guidance** - expert consultation on which models will succeed in your market
- **Innovation-driven** - always in step with trends and latest technologies
- **Regional flexibility** - tailored SKUs, platforms, and operating systems
- **Deep market expertise** - understanding local specifics to support your strategy
- **Reliable logistics** - consistent and dependable delivery

Steps of Collaboration

1. Contact & Needs Assessment

We listen to your requirements and understand your market specifics.

2. Product Selection

Together we choose the best models and solutions for your business.

3. Marketing & Sales Support

We provide ready-to-use graphic assets, POS materials, and promotional guidance.

4. Logistics & Delivery

Reliable logistics network and flexible solutions for different regions.

5. After-Sales & Long-Term Partnership

Warranty, service, and continuous consultation to ensure growth.



● BLAUPUNKT

IRON  LYNX

OFFICIAL SPONSOR



Trusted by Our Partners





LET'S TALK!

info@uniondistribution.eu

+420 296 182 770